

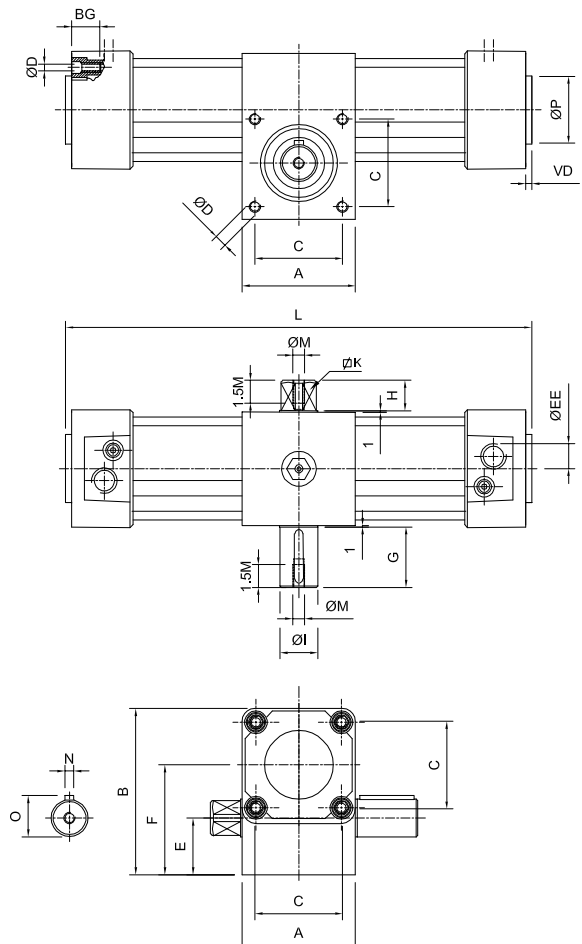
Type Double acting pneumatic rotary actuator
 Rated temperature -20...80 °C (-4...176 °F)
 Fluid temperature Max. 80 °C (176 °F)
 Fluid Filtered compressed air with or without lubrication
 Working pressure 2...10 bar (29...145 psi)
 Rotation angle 90° 180° 360°
 Angular tolerance +2° / -0°
 Torque (at 6 bar) See table
 Option accessory Fine rotation angle adjustment
 Mounting Mounting holes in two faces and end cups, pattern holes according most series mounting accessories
 Materials Aluminum pressure die cast end caps and piston, SAE 4140 pinion and rack, profiled aluminum tube, polyurethane seals



Ø		Non-cushioning With cushioning With cushioning and magnetic piston		
32	90°	0.047.410.090	0.047.420.090	0.047.430.090
	180°	0.047.410.180	0.047.420.180	0.047.430.180
	360°	0.047.410.360	0.047.420.360	0.047.430.360
40	90°	0.048.410.090	0.048.420.090	0.048.430.090
	180°	0.048.410.180	0.048.420.180	0.048.430.180
	360°	0.048.410.360	0.048.420.360	0.048.430.360
50	90°	0.049.410.090	0.049.420.090	0.049.430.090
	180°	0.049.410.180	0.049.420.180	0.049.430.180
	360°	0.049.410.360	0.049.420.360	0.049.430.360
63	90°	0.050.410.090	0.050.420.090	0.050.430.090
	180°	0.050.410.180	0.050.420.180	0.050.430.180
	360°	0.050.410.360	0.050.420.360	0.050.430.360
80	90°	0.051.410.090	0.051.420.090	0.051.430.090
	180°	0.051.410.180	0.051.420.180	0.051.430.180
	360°	0.051.410.360	0.051.420.360	0.051.430.360
100	90°	0.052.410.090	0.052.420.090	0.052.430.090
	180°	0.052.410.180	0.052.420.180	0.052.430.180
	360°	0.052.410.360	0.052.420.360	0.052.430.360
125	90°	0.033.410.090	0.033.420.090	0.033.430.090
	180°	0.033.410.180	0.033.420.180	0.033.430.180
	360°	0.033.410.360	0.033.420.360	0.033.430.360
160	90°	0.034.410.090	0.034.420.090	0.034.430.090
	180°	0.034.410.180	0.034.420.180	0.034.430.180
	360°	0.034.410.360	0.034.420.360	0.034.430.360



Optional fine rotation angle adjustment accessory



Ø	Torque (Nm)	A	B	BG	C	ØD	E	ØEE	F	G	H	ØI	K	L			ØM	N	O	ØP	VD
														90°	180°	360°					
32	7,2	50	70	17,5	32,5	M 6	25	G1/8"	45	30	16	14	11	237	284	379	M 5	5	16	30	4
40	13,6	55	80	17,5	38	M 6	27,5	G1/4"	52,5	35	18	18	14	269	325	438	M 6	6	20,2	35	4
50	24,7	65	95	17,5	46,5	M 8	32,5	G1/4"	62,5	40	18	22	17	290	355	487	M 6	6	24,2	40	4
63	44,9	75	110	17,5	56,5	M 8	37,5	G3/8"	72,5	40	20	25	19	324	400	550	M 8	8	27,5	45	4
80	108,6	100	150	18,5	72	M 10	50	G3/8"	100	50	22	30	24	400	513	739	M 8	8	32,5	45	4
100	183,8	115	170	18,5	89	M 10	57,5	G1/2"	112,5	50	25	35	27	435	558	803	M 10	10	37,9	55	4
125	353,4	140	205	27,5	110	M 12	70	G1/2"	135	65	30	45	36	518	669	971	M 12	14	48,3	30	6
160	723,8	180	260	34	140	M 16	90	G3/4"	170	80	40	60	46	631	819	1196	M 16	18	63,7	65	6